

# METEOR

SEMI-AUTOMATIC FINE-PITCH PRINTER WITH VISION

## FEATURES

- Dual Camera Vision System with digital zoom
- Simple 'Point and Click' Vision Set-up
- Screen sizes up to 23"
- Print on PCBs, Ceramics, Solar Cells or almost any substrate material
- Robust Construction for Outstanding Printing
- Fast Product Change Over
- Pneumatic Stencil Clamping
- Motorised Control of all Printing Parameters
- Vacuum Tooling Option
- Unlimited Product File Storage
- Easy Access for Stencil Cleaning
- Familiar Microsoft Windows Operator Interface Program Available in Different Languages



## OVERVIEW

The versatile Meteor printer from Reprint is compact, precise, exceptionally easy to use and ideally suited to R&D development, prototyping or small to medium size batch printing environments.

The printer is mechanically robust and uses quality components throughout ensuring high accuracy, repeatable printing every time. All this gives you exceptional reliability, minimum maintenance and low cost of ownership.

The familiar Windows™ operator interface allows easy access to the printer's extensive features which includes unlimited board files, a 'Set-up Wizard' for fast, error-free product configuration, user password protection and board file backup to disk or network.

All print parameters are programmable and the easy recall of saved files along with pneumatic stencil clamping make setup and changeover fast and efficient.

The advanced twin camera vision system includes four image overlay types to aid product alignment with a simple 'Point and Click' set-up. The vision can recognize and save any shape or feature on a PCB or substrate and includes adjustable alignment tolerance settings for Go/No Go printing. The digital zoom facility allows for ultra-fine printing at 0.3mm pitch or less.

Screen sizes up to 23" can be accommodated to provide borderless printing on substrates up to 400 x 460mm and from 0.1 to 10mm in thickness.

The vacuum tooling or full-size vacuum table option provides the flexibility to print many different types of substrate and together with the capability to print non-solder applications makes the Meteor the ideal partner for all your printing needs.

**REPRINT**

## SPECIFICATION

Maximum Board Size  
400 x 480mm

Maximum Print Area  
400 x 460mm

Board Thickness  
0.1 to 10mm

Printing Modes  
Print/Print  
Flood/Print  
Print/Flood  
1 or 2 deposits

Twin Camera Vision System  
with graphical overlays and  
Go/No Go programmable  
alignment accuracy settings

Stencil Location  
Manual, pneumatically  
clamped

Ultra-Fine Pitch  
0.3mm or less

Print Repeatability  
 $\pm 10$  microns

Squeegee Types  
Metal or Polyurethane  
150mm 220mm 300mm  
360mm 420mm 460mm

Print Speed  
5-100mm/S

Print Pressure  
0.1 to 20Kg

Snap Off Speed  
0.3 to 10mm/S

Product File Storage  
Unlimited

Product Changeover  
5 minutes or less

## OPTIONS

Full Size Vacuum Table

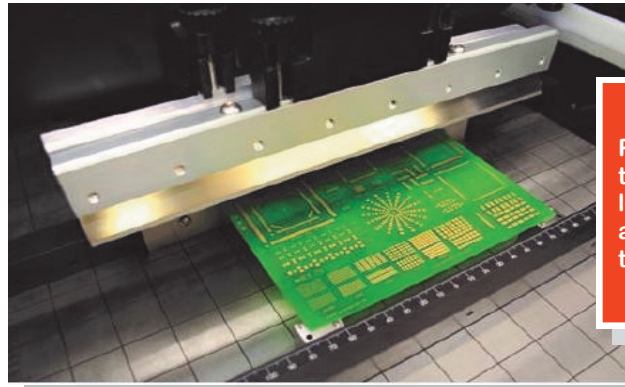
Flood Blades of all sizes

Magnetic Tooling Posts :  
Flat (20mm Ø)  
Vacuum (20mm Ø)  
Flat (4mm Ø)  
Conical (4mm Ø)

Multi-Purpose Screen Adaptor  
For Stencils Smaller than  
584 x 584mm (23")

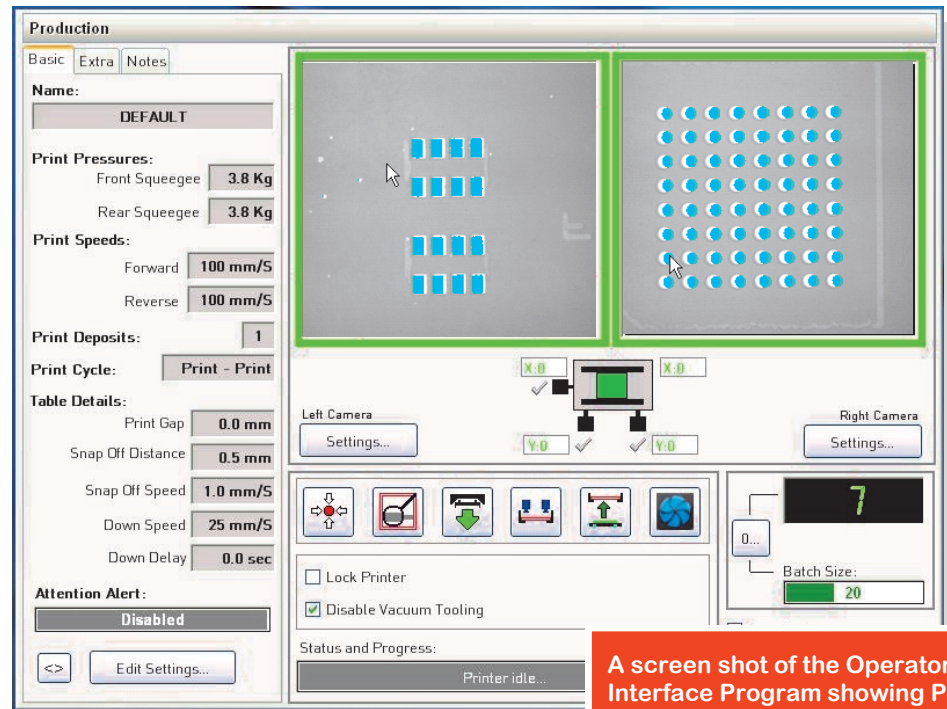
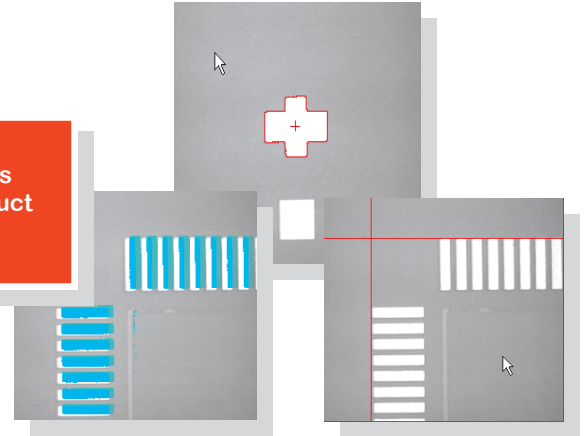
## DIMENSIONS

1300 x 969 x 1348mm



PCB on printing  
table showing  
locating  
arrangement on  
tooling rails.

Examples of the vision overlays  
available to aid accurate product  
alignment.



A screen shot of the Operator  
Interface Program showing PCB  
image with overlays.

For your nearest distributor or agent contact Reprint directly.



10 Enterprise Park • Piddlehinton • Dorchester • Dorset • England DT2 7UA

tel. +44 (0)1305 849254  
email: [enquiries@reprintservices.co.uk](mailto:enquiries@reprintservices.co.uk)  
website: [www.reprintservices.co.uk](http://www.reprintservices.co.uk)